



Refer

Support

Events

Charity Update - Summer 2026



Dear Friend of Wiltshire Treehouse

Summer is here and the holidays are just around the corner! As the days grow longer and the sun shines brighter, we're reminded of the warmth and generosity that keeps our charity thriving.

Read on to see what we have been up to since the Spring and what we have planned over the next few months.

Thank you for being part of our journey and for your ongoing support.

The Wiltshire Treehouse Team

NEW Chill and Chat Sessions for Young People

Following feedback we have now set up a monthly social session where young people in school years 6-13 (roughly aged 11-18) can drop in for snacks and activities alongside bereaved peers.

The group will be held once a month at our base in Westlea, Swindon. If your child would like to attend please contact us at admin@wiltshiretreehouse.org.uk.



Upcoming Events

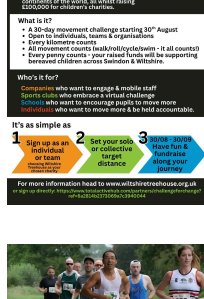
This Summer we have various events for bereaved families including **Memories in Colour** (Southwick, July), a trip to **Kelly's Animal Therapy** (Frome, August), a **picnic for families** (Swindon, August), **Chill & Chat Wellbeing-Meet Up** (Swindon, August). Keep an eye on your emails for more information!

Events open to everyone (including the public)
Have fun and help raise funds for our work!



THURSDAY 20TH AUGUST
Teddy Bears Picnic, Coate Water Country Park Swindon, 11:30 to 13:30

Join us for a fun family picnic! Bring your teddies and a sandwich, we'll provide the snacks and a sweet treat, along with games and activities. £5pp.
<https://WHTteddybearspicnic2026.eventbrite.co.uk>



30TH AUGUST TO 30TH SEPTEMBER
Challenge for Change!

Join Wiltshire Treehouse as we take part in the International Challenge for Change. Collectively moving 100,000km, the distance over the 7 continents of the world, all whilst raising £100,000 for children's charities.
<https://wiltshiretreehouse.org.uk/challenge-for-change/>



SUNDAY 27TH SEPTEMBER
Swindon Half Marathon, Coate Water Country Park Swindon

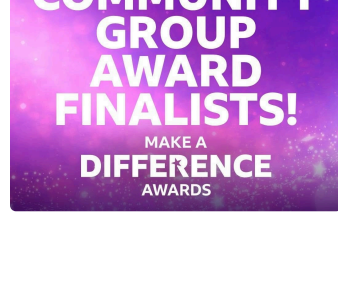
Wiltshire Treehouse is proud to be a Swindon Half Marathon charity partner and we are looking for people to run on our behalf. For further information and to sign up please visit <https://wiltshiretreehouse.org.uk/swindon-half-marathon/>

We're finalists!!! BBC Radio Wiltshire Make a Difference Awards

Wiltshire Treehouse has been shortlisted in the BBC Radio Wiltshire Make a Difference Awards, under the Community Group Award category!

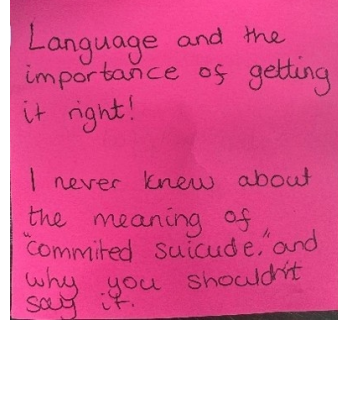
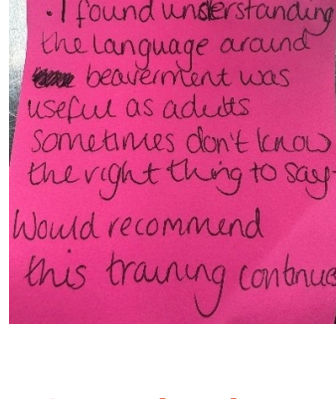
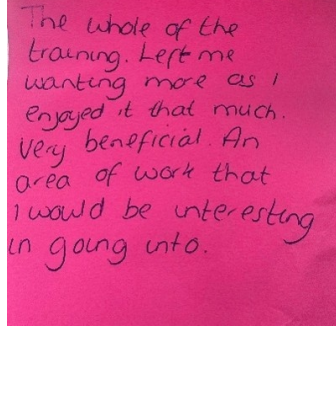
We're so excited to have been chosen from hundreds of nominations. We're so grateful that the passion and hard work of our team and volunteers has been recognised.

We are looking forward to joining the other amazing finalists at the awards ceremony in September!



Childhood Bereavement Training

Our amazing Service Director Kath has been busy delivering training over the spring for lots of amazing and dedicated professionals. Attendees find these sessions really useful and leave with the skills needed to support grieving children and young people in their care.



Save the date!

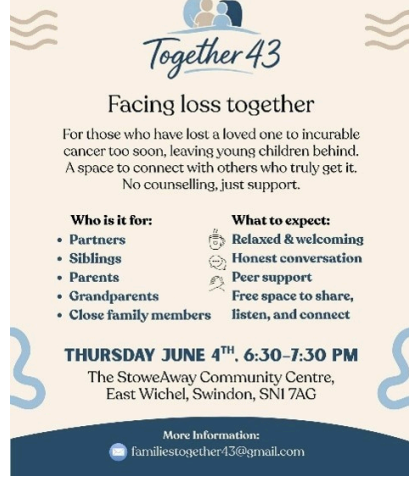
We will be holding our next **First Line Bereavement Support Training** day on **Wednesday 4th November 2026, 10:00 – 15:00**

at Rowdefield Training & Education, Devizes. Registration will open nearer the time so keep an eye on our socials or visit <https://wiltshiretreehouse.org.uk/training/>

Suitable for professionals working with 4-18yr olds, this 1 day course will develop the skills and techniques required to provide first line bereavement support. Suitable for anyone working with this age group.

Learning Outcomes: *Understand the grieving process, age related grieving behaviours and practical methods of support. Understand risk factors and know where and how you can signpost for specialist support.*

Together43 Support Group



A new support group for those who have lost loved ones to cancer is starting in the Swindon area.

'This is a relaxed, welcoming peer-support group - no counselling, just a chance to connect, share, or simply listen in a safe space. It's open to partners, siblings, parents, grandparents, and close family members grieving the loss of a loved one.'

For further information see @Together43 or email Amy at familiestogether43@gmail.com

1st Wiltshire Treehouse Charity Gala

Wiltshire Treehouse held our first Charity Gala in April at The Double Tree Hilton Swindon. The night was enjoyed by all, including games, an auction, 3 course meal and a live band. The 2025/26 mayor of Swindon Fay Howard gave a rousing speech about the importance of the support we provide to those who need us. Huge thanks to all who came and we hope to repeat the fun in later years.



How to Refer to Wiltshire Treehouse

Referrals for our bereavement support services can be made by parents/carers via our website or using the button below.

These include group programmes in the Swindon and Trowbridge areas, seasonal events and 1 to 1 support which are all designed to help children with their grief.

[Online Referral Form](#)

To be the first to know about Wiltshire Treehouse news, activities and up and coming events, follow us on one of our social media channels:



Wiltshire Treehouse

Grief Support for Children & Young People in Swindon & Wiltshire

Phone: 01793 987105

Email: admin@wiltshiretreehouse.org.uk

George & Anne Tweed Rooms, Westlea Primary School, Langstone Way, Swindon, SN5 7BT

www.wiltshiretreehouse.org.uk

Registered Charity No: 1159719

If you would like to unsubscribe, please click here.

